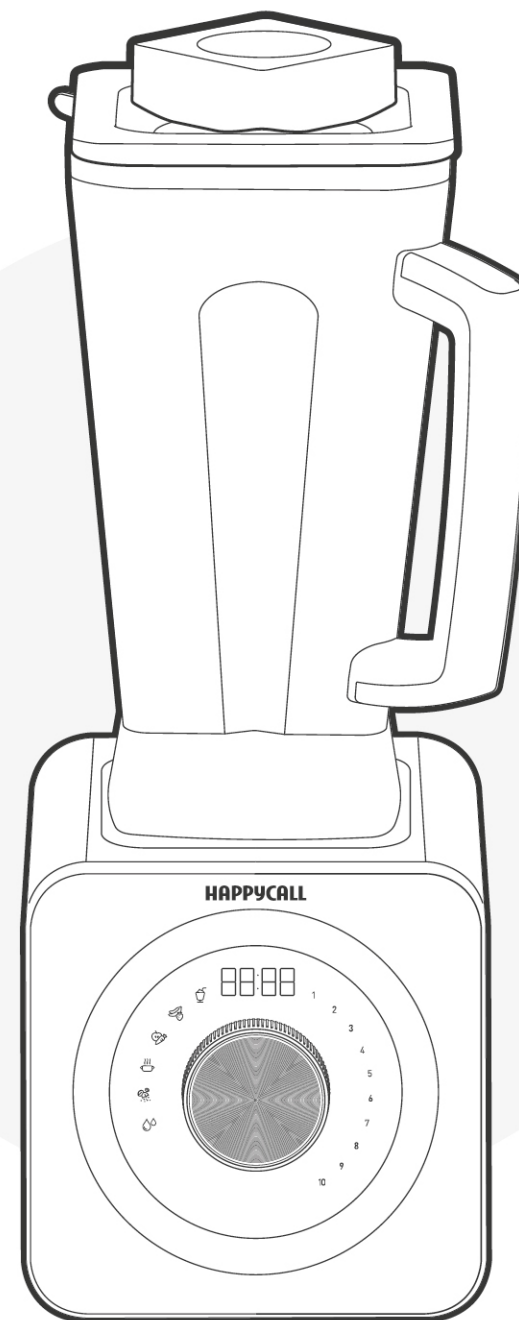


AXLERIM Z

USER GUIDE
HC-BL5000_A



HAPPYCALL

Happycall Co., Ltd.
104-2 Golden Root-ro, Juchon-myeon, Gimhae-si,
Gyeongsangnam-do, 50969, Korea

www.happycall.kr

Contents

| | |
|--|------|
| Precautions for Safety Use | P.03 |
| Safety Function System | P.06 |
| Product Key Features | P.07 |
| Part's detail | P.09 |
| Dial operation guide | P.10 |
| Measuring Cup and Lid assembly / Push rod's exploded view | P.13 |
| How to use push-rod / How to replace push rod battery | P.14 |
| Self-Cleaning / Cleaning and Maintenance | P.15 |
| Breakdown and measures | P.16 |
| Product Specification / Product warranty | P.17 |

- * For safe use, make sure to read this instruction manual before using the device correctly.
- * After reading this manual, please keep it in a place easily visible by the users.
- * Operating voltage of this product is AC 220-240V, 50/60Hz.

Precautions for Safety Use

- This is to ensure safety of users and prevent property damage.
- Please read the notices carefully before using for the safe use, and use it correctly.
- After reading the instruction manual, please keep it in a place easily visible by the users.

WARNING

If users violate the labeling, they could suffer death or serious injury.

NOTE

If users violate the labeling, they could suffer significant injury or property damage.

WARNING

Do not use anything other than AC 220-240V.

If you use different voltage, it could shorten the lifespan of motor or cause electric shock, fire or breakdown.

Do not unplug or plug in the cord with wet hands. Otherwise, it may cause electric shock.

Do not clean the power cord or plug with water.

Do not wipe the power cord with wet hands or a cloth.

There is the risk of electric shock, fire, or injury.

Plug in correctly and safely in the outlet for use.

If not plugged correctly, it could cause fire or electric shock.

Do not transform the power cord, such as bending, tying, or pulling excessively.

Do not place it near high temperature, or near inflammables, such as stove.

Do not place heavy objects on it.

The power cord could be damaged, and this may result in fire, or electric shock.

Never try to dismantle or do not use the product, if power cord, plug, or other components are damaged.

Otherwise it may cause electric shock, short circuit or a fire.

If warranty service is needed, please contact your original seller.

Please use an exclusive outlet, and do not use several plugs at the same time.

Otherwise, it may cause electric shock, short circuit or a fire.

Do not move or disassemble the blender while it's operating.

WARNING

Please use and keep it absolutely out of reach of children.

There is a risk of serious injury.

When adults with poor somatic sense and mental ability intend to use it, consult a person with sufficient knowledge in the precautions for safe use.

Do not remove the food attached to the vessel wall or whisk the liquid with power on. Make sure the container is always separated from the main body, or the power cord is unplugged, before taking out or whisking the food.

The device may stop operation automatically by the safety function system when food is attached to the vessel wall, or due to a temporary overheat. Try to avoid using material with little moisture or viscosity.

Never separate or move the main body during operation.

Do not put anything other than the material or push rod inside the container during operation.

Putting hands or tools such as chopsticks and knives could cause serious injury or accident, or malfunction.

When using the push-rod, make sure to use it with the lid closed. (See page 14)

During or after cooking hot food, always be careful not to burn.

After soup mode, please be careful not to burn yourself as the ingredient gets hot.

Do not operate the device when the container is empty. It could lead to fire, accident, or breakdown.

Do not disassemble or repair the device arbitrarily, because it may cause fire, electrical shock, injury, or breakdown. Also, do not modify it discretionally, and do not insert foreign objects such as fingers, metal pin in the gaps or holes in the main body.

Make sure the main body never touches water or liquid. Otherwise, it may cause fire, electrical shock, injury, or breakdown.

Be careful not to touch the sharp edges of the blade during cleaning. There is a risk of injury.

Make sure to unplug the power cord from the outlet when not using or keeping the equipment.

Do not use it for purposes other than its intended purpose.

Do not use it outdoors or for commercial purposes.

Please keep the packing materials (Vinyl, Styrofoam, etc) away from children and dispose it.

Packing materials may cause suffocation

Precautions for Safety Use

NOTE

Before turning on the product, place the container properly and assemble the lid and the metering cap correctly.

Use the device on a flat, hard floor material.
Use the device after cleaning up its surroundings.

Stop the operation when the container is shaken unstably during operation.
Use the container after seating it exactly. If not, it may cause injury or malfunction.

If the device smells burn, stop the operation immediately.
If the product is hot, unplug the power cord, and cool it until it becomes similar to the room temperature before operating it again.

If abnormal noise, excessive heat, or smoke occurs, stop using it immediately.
Otherwise, it may cause fire, electrical shock, injury, or breakdown.

Overheating the motor may lead to breakdown, so do not use it for more than 10 consecutive minutes.

When separating the container, wait until the blade completely stops rotating before lifting the container.
Otherwise, it can damage the driving part.

Do not put the material in the amount flowing over MAX mark of the vessel, to prevent the contents from spilling.

When you cook hot beverage or food (soy milk, hot soup, etc.), close the lid and metering cap tightly, so that the contents are not overflowed.
Otherwise, it may cause burns or injuries

In cases of hard or viscous materials, start at low speed, and change it to high speed slowly.

Do not put material in too much or too less amount. (See recipe)
Otherwise, the Safety Function System can be activated or motor can idle.

Do not use material that is too thick or that contains little moisture.
A temporary overheating could trigger the Safety Function System, automatically stopping the machine.

NOTE

If it is dropped or exposed to shock, the product can be damaged, so precaution is required.

Do not use the main body and the push rod in dishwasher.
The electronic circuit is mounted in it, so using dishwasher may cause a malfunction.

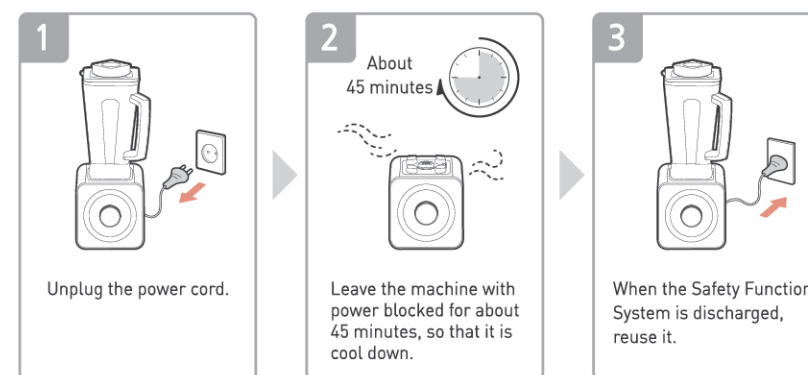
Battery is installed in the top cover of push rod, so do not wash it with water.

Safety Function System

The Safety Function System is installed to control excessive operation.

When the motor is overheated, the overheating prevention mode is designed to be activated, automatically stopping the machine.

When the motor is automatically stopped,

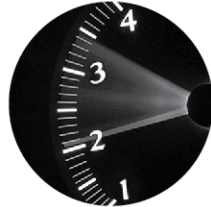


Product Key Features

Super uAC Moter

Up to 4.75 horsepower 28,000RPM

The overwhelming blending with different level. With overwhelming power of rotating up to 500 times per second, it can perform blending of hard nuts and ice as well as fruits and vegetables quickly.



Axlerim

Spine of Blender

The super-strong Super UAC motor is perfectly connected to 420J2 STS blades, to realize the overwhelming blending without fine shaking.



420J2 STS Blade

Different feeling of swallowing!

6 sided, high-strength 420J2 STS blades realize dip blending, which mixes and kneads the material vertically and horizontally in three dimensions.



Auto Blending

Easy Control Function

Three auto-modes are installed in which the number and time of blending rotation is automatically programmed, making blending more convenient by pushing just one button.



Temperature-measuring Push Rod

Temperature measurement function is equipped in the push rod

It helps to grind the material more effectively, and its temperature measuring function installed inside enables convenient measuring of temperature of food in the chef mode.



Container made of Tritan material

BPA-Free eco-friendly materials

Tritan is an eco-friendly material with excellent heat-resistance, shock-resistance, and durability, so it is widely used in baby bottles.



Fluidic Design

The maximum blending efficiency

The optimized design of direction and angle of 6 sided blades, the angle of incidence of rectangular container, and the side protruding round enables the three-dimensional blending.



Cooling Circulation System

Motor circuit protection and maintaining of high rotation

Air cooling circulation system is equipped, which prevents overheating of super-UAC motor.



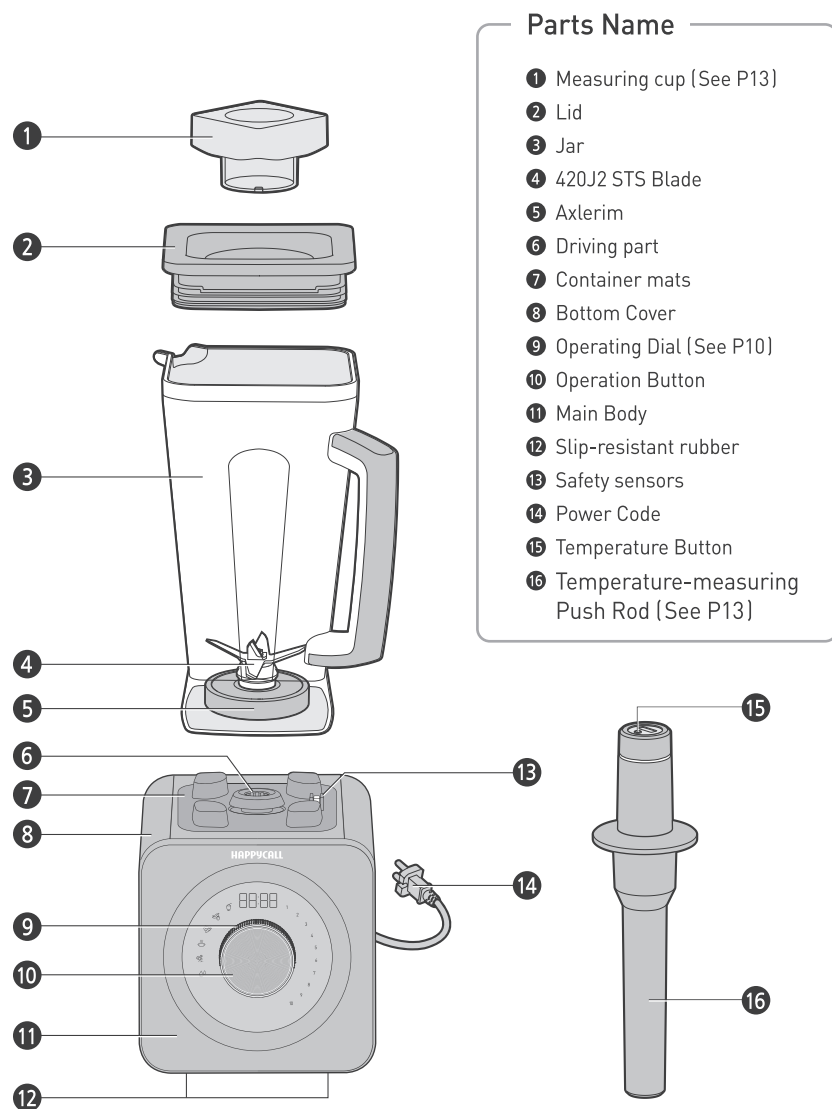
Self Cleaning

Clean the blender used every day

With self-cleaning, you can clean the machine easily every day. Just put water about 1L in the container and operate the Smoothie mode.



Parts Detail

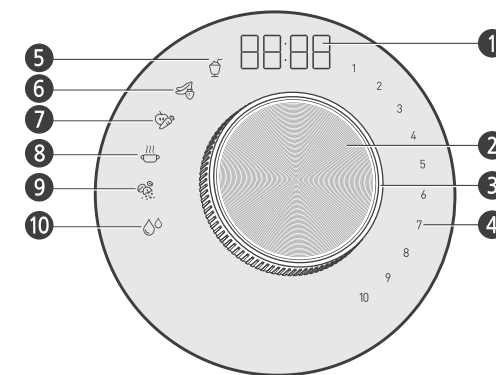


Dial Operation Guide

Dial Operation Detail View

Specific names

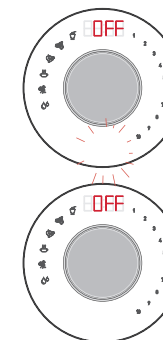
- ① Operation Signal LED
- ② ON/OFF & Operation Button
- ③ Operation Dial
- ④ Speed Level LED
- ⑤ Sorbet Mode (Auto Blending)
- ⑥ Soft Fruit Mode (Auto Blending)
- ⑦ Hard Fruit / Vegetable Mode (Auto Blending)
- ⑧ Soup Mode (Auto Blending)
- ⑨ Grinding Mode (Auto Blending)
- ⑩ Cleaning Mode (Auto Blending)



Ready Mode

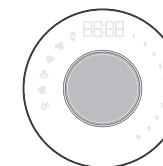
Plug the power cord of the machine and mount the container on the main body. If the red light comes on the power lamp and operation indicator lamp, the device is in the state of being ready.

⚠ If the container is not seated on the main body properly, the operation indicator lamp blinks and does not work. At this time, if you separate the container and seat it on the main body properly again, the state changes to the ready mode.



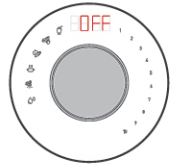
Power Save Mode

If the device is not used for 3 minutes in ready mode, it switches to power save mode. At this time, the light on the power lamp is kept, and only the light on the operation indicator lamp is turned off. When pressing the ON/OFF & Play button, it switches to the ready state again.



Operation Dial Guide

Simple-Use Mode



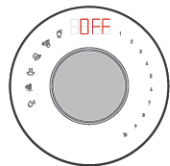
1. When AXLERIM is in ready mode, the LED will display OFF and the operation dial will light up left and right.



2. Keeping ON/OFF & Operation button pressed, the motor operates with maximum speed with Operation signal LED displaying 'ON'.

3. Releasing the button will cause the machine to return to ready mode with the LED displaying OFF.

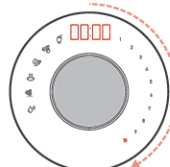
Manual Mode



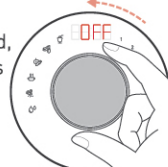
1. When AXLERIM is in ready mode, the LED will display OFF and the operation dial will light up left and right.



2. Turning the operation dial clockwise, AXLERIM lights up with an orange light.



3. There are 10 levels of speed, and each stop after 10 mins of operating time.



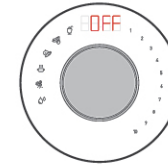
4. Turn the dial back to OFF to restart the operation.

⚠ Make sure that the voltage is compatible for use.

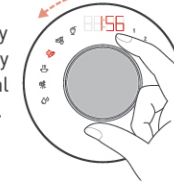
⚠ To halt all operation, press the ON/OFF button or set the operation dial to OFF.

⚠ In manual mode, to prevent overheating, the blend will stop automatically after 10 mins of run time

Auto Blending Mode



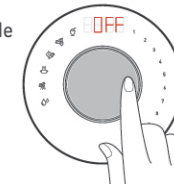
1. When AXLERIM is in ready mode, the LED will display OFF and the operation dial will light up left and right.









2. Turn the operation dial until the orange light is on your desired mode of choice.



3. Operate the selected mode by pressing ON/OFF button.

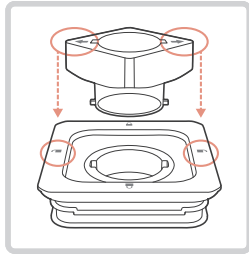


4. When operation is done, it automatically stops.
 ※ Pressing the ON/OFF button while operating will cease the operation and return to ready mode.

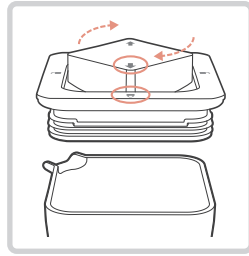
| Auto Blending Mode | Speed(Time) : operating time | Auto Blending Mode | Speed(Time) : operating time |
|--|--|--|---|
|  Sorbet Mode | Speed 10 level (8sec) Stop (2sec) Speed 10 level (8sec) stop (2sec) Speed 10 level (8sec) Total 28 sec |  Soup Mode | Speed 7 level (7sec) Speed 10 level (7min 53sec) Total 8min |
|  Soft Fruit Mode | Speed 10 level (20sec) Stop (2sec) Speed 10 level (10sec) Stop (2sec) Speed 10 level (10sec) Total 44 sec |  Grinding Mode | Speed 5 level (5sec) Stop (2sec) Speed 10 level (3sec) Stop (2sec) Speed 7 level (5sec) Stop (2sec) Speed 10 level (3sec) Stop (2sec) Speed 7 level (5sec) Stop (2sec) Speed 10 level (3sec) Total 34sec |
|  Hard Fruit / Vegetable Mode | Speed 10 level (30sec) Stop (2sec) Speed 6 level (10sec) Stop (2sec) Speed 10 level (60sec) Stop (2sec) Speed -6 level (10sec) Total 1min 56sec |  Cleaning Mode | Speed 10 level (20sec) Stop (2sec) Speed 10 level (10sec) Stop (2sec) Speed 10 level (10sec) Total 44sec |

Measuring Cup and Lid assembly

When assembling the metering cap

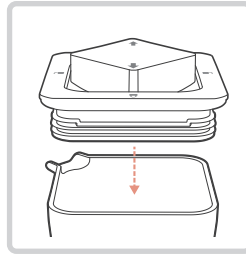


1. Align → mark on the metering cap with the mark on the lid, and then snap the lid so that they overlap.



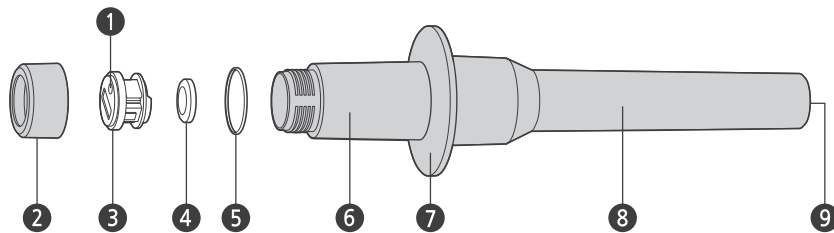
2. Turn it clockwise 90 degrees so that the → mark on the metering cap is placed on the mark on the lid.

closing the lid



Put the lid on the container to fit well, and close the lid by pressing it.

Push rod's exploded view



Parts name

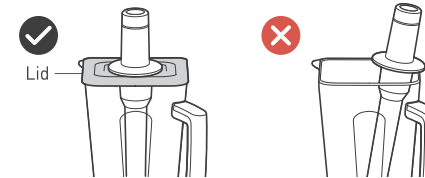
- | | | | | |
|----------------------|--------------|-----------------|--------------------------------------|--------------------|
| 1 Temperature button | 2 Top cover | 3 PCB assembly | 4 Battery | 5 Decorative rings |
| 6 Handle | 7 Skip-guard | 8 Push rod body | 9 Temperature sensor (bottom center) | |

How to use push-rod

1. Push rod is used to measure the temperature of food inside the container, or to mix the food.
2. Make sure to close the container lid during use. And separate only the metering cap with the lid closed, and put the push rod in the container. (Make sure that the skip guard at the top of the push rod is not stuck at the lid and touches the blade.)

⚠ When using the push rod while operation, be sure to use it while the lid is closed.

⚠ In the interior of the vessel, never use tools other than the material and the push rod.



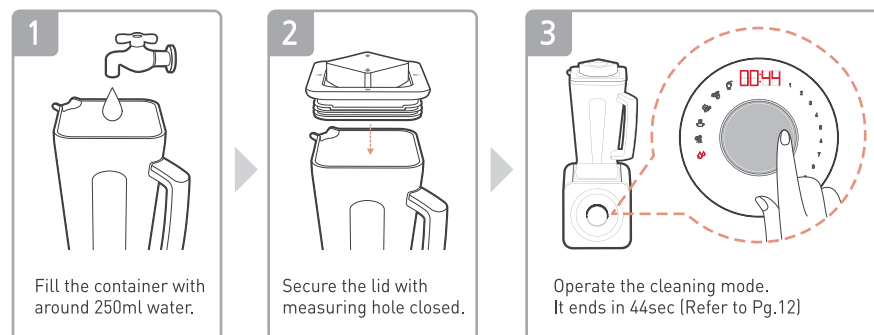
3. To check the temperature, simply press the temperature button on the top of the push rod. (Contact the temperature sensor where you want to check and just press the temperature button.)
4. Press the temperature button again, and the temperature sensor is turned off. (Otherwise, the sensor will turn off automatically after 120 seconds)
5. The maximum temperature that can be measured by the push-rod is 104°C [220°F]. (If you press the temperature button for 2 seconds or longer, the °C state will switch to °F state, and °F state will change to °C state.)

How to replace push rod battery

1. Open the top cover by turning it counter-clockwise.
2. Gently remove the top PCB assembly from the push rod to avoid pulling the inside wires.
3. Remove the battery at the bottom of the PCB assembly. Replace it with new battery, and close PCB assembly and the top cover to the original state. Use only **CR2032** type battery.

Self cleaning

Follow these steps to clean the container with ease.



Cleaning and Maintenance

1. Activate self-cleaning before washing the container.
2. After separating the container from the main body, clean it completely with a soft sponge moistened with a detergent.
3. Clean the gap and every corner of the blade using a soft brush and rinse it.
⚠ Do not put water in the container for a long time, since it causes corrosion or breakdown.
4. Perform the self-cleaning 1-3 times so that no detergent is left in the container.
5. After cleaning, dry it thoroughly after removing moisture with a dry cloth.
⚠ Any remains of detergent or water could cause corrosion or breakdown.
6. Wipe push rod clean with a soft cloth.
⚠ Since the push rod has battery mounted in the top cover, do not wash it with water.
7. Wipe the body exterior clean with a soft cloth.
⚠ Make sure the main body never touches water or liquid, because it may cause fire, electrical shock, injury or breakdown.

Breakdown and measures

Self-diagnosis and Action

Before requesting A/S, please check the following matters.
In most cases, it operates normally when you unplug and plug it in again.

It may not operate normally with lack of knowledge and experience on how to use it or due to minor causes. If you can not solve the problem even after checking the following matters, please contact the customer center.

It is not working.

- Make sure the outlet is plugged in correctly.
- Check the light comes to the power lamp.
- Check whether the circuit breaker of indoor outlet is triggered to prevent the power supply.
- Check if the operating voltage is AC 220-240V.
- Make sure the container is properly seated. If it is not seated, it does not operate.
- ▶ If it is still not working after you confirm the matters above, please contact the customer center.

It stops during normal operation.

- Please check the following steps if the ingredient is too hard or dry.
 - 1) Add more water or any liquid. (milk, soy milk, etc)
 - 2) Use the pusher.
 - 3) Gradually increase the speed from low to high.
(A temporary overload from excessive working might stop Axlerim operated by auto-safety system. In this case, please wait until the safety system is cleared)
- ▶ If it continues to stop in spite of above information, please contact to customer center.

It smells of burning during operation.

- The initial use may cause some odor, but it is unique characteristic of a motor, and not a breakdown.
- Continuous operation for a long time or excessive use could cause a slightly burning smell.
- Please make sure that the system works after the safety function system is discharged.

Standard of goods

| | |
|----------------------------------|---|
| Product Name | Food mixer (High speed blender Axlerim Z) |
| Model No. | HC-BL5000_A |
| Rated voltage | AC 220-240V, 50/60Hz |
| RPM | 28,000rpm |
| Power consumption | 1,400W |
| Maximum Power consumption | 3,600W |
| Quality of Material | High strength heat treatment stainless steel, BPA-free Tritan, Stainless steel, ABS, PP |
| Container Volume | 2,000ml |
| Product Size | 212(W) X 185(L) X 476(H) mm |
| Product Weight | 5Kg |
| Manufacturer | Happycall Co., Ltd. |
| Country of Origin | Korea |

Product warranty

1. We will repair defects in the quality, performance, and functionality occurred in the normal use within the warranty period free of charge, and if that cannot be repaired, we'll replace the product.
2. In the following cases, we will repair it with charge even during the warranty period.
 - 1) Malfunction caused by intention or gross negligence by consumers.
 - 2) Failures caused by repairs or modifications in places other than our customer centers or distributors.
 - 3) Breakdown following the breach of the matters set forth in the instruction manual.
 - 4) Failure caused by abnormality of power or failure of connected equipment. (regardless of quality duration.)
 - 5) Product failure or defects due to natural disasters